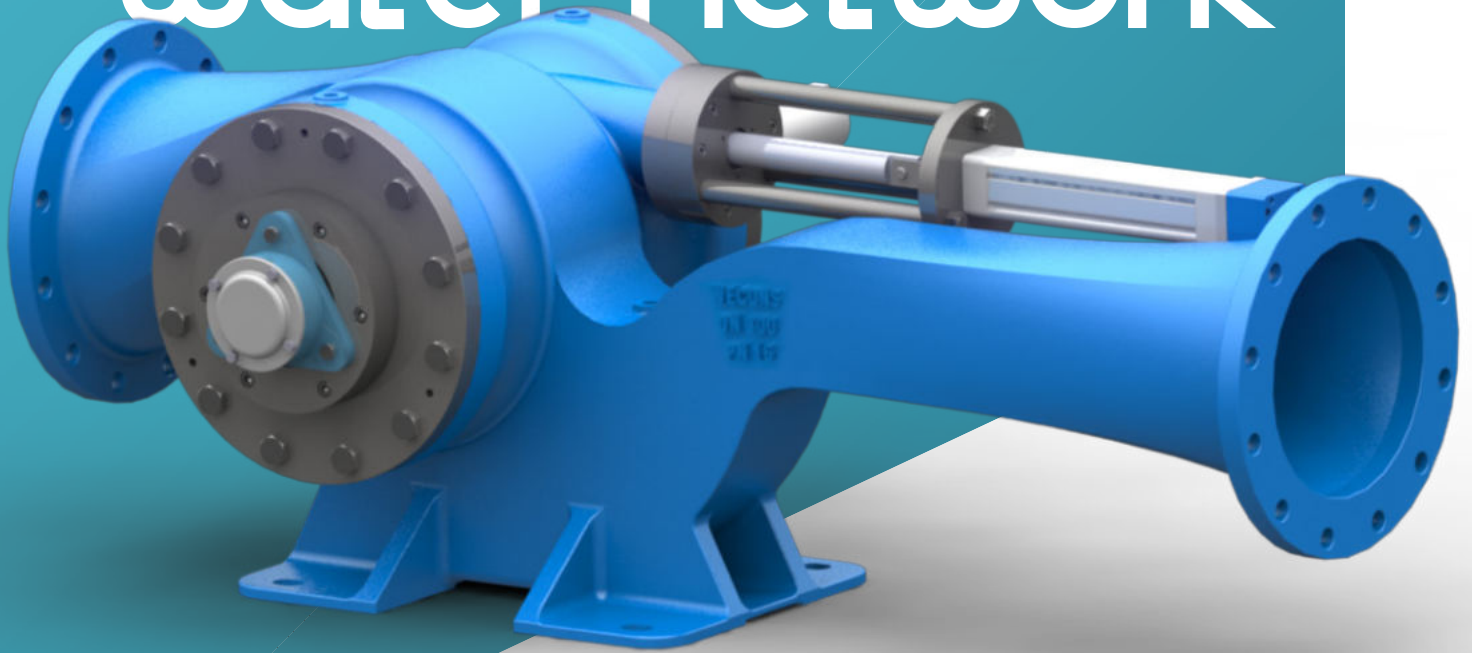


earn by
water network



prf
developed by



wecons
water engineering consulting

presentation

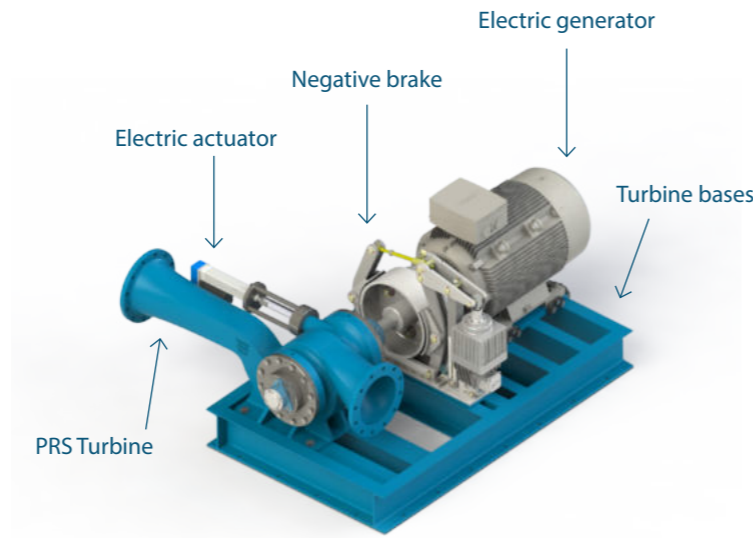
PRS is a new in-line turbine able to control pressure or flow rate inside a water transport or distribution network, through production of clean energy

PRS is an hydraulic turbine, to be installed into water supply systems such as waterworks, water treatment plants, etc.

PRS replaces pressure regulation valves and/or needle valves and allows the production of green electric power

PRS can modulate both flow rate and pressure and has high efficiency values compared to other solutions

PRS is a patented device and it is sponsored by Italian Government

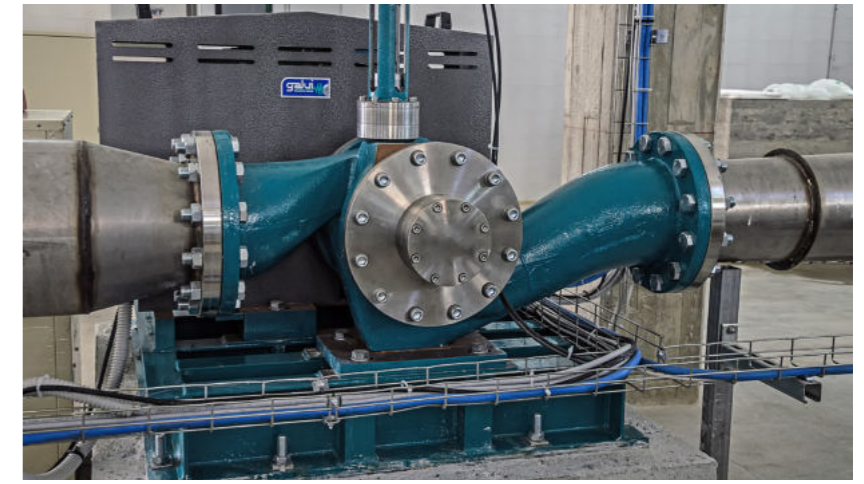


case history: siciliacque s.p.a. (italy)

PRS recovers 330 MWh per year in a real drink water network; energy that was dissipated and lost in the past

Plant datasheet

- PRS model.....M300
- Mean flow rate.....130 l/s
- Pressure drop.....4 bar
- Peak electrical power.....75 kW



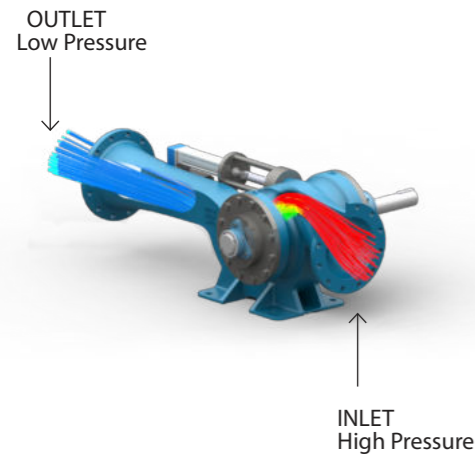
equipment

All materials are compatible with drinkable water

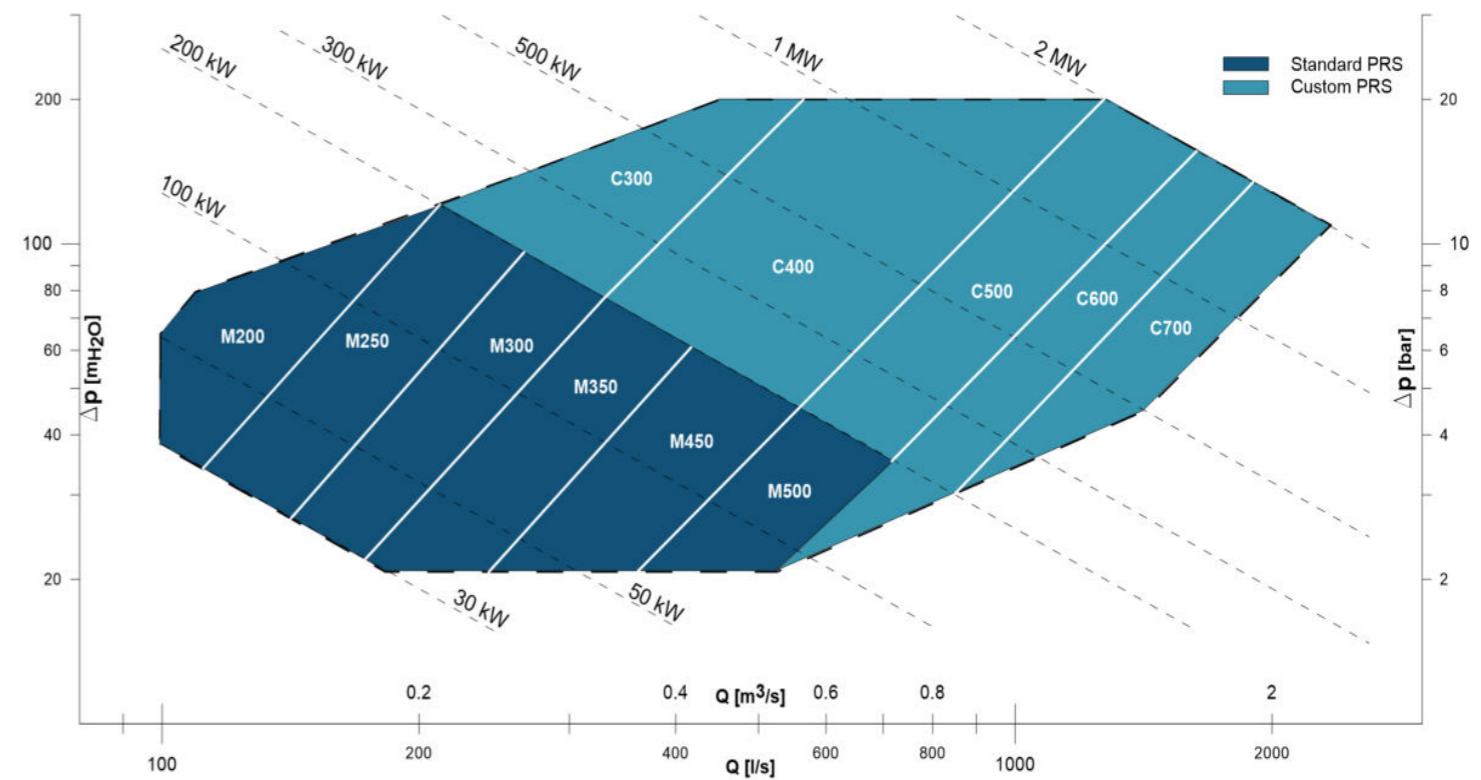
The electrical actuator allows to rotate the PRS internal flap and to regulate the pressure or the flow rate in the pipeline

The negative brake guarantees the continuity of the water supply even in the case of electricity production detachment

PRS can be equipped with inverter, oleodynamic valves and sensors for safety and remote diagnostic



prs application chart



management and benefits

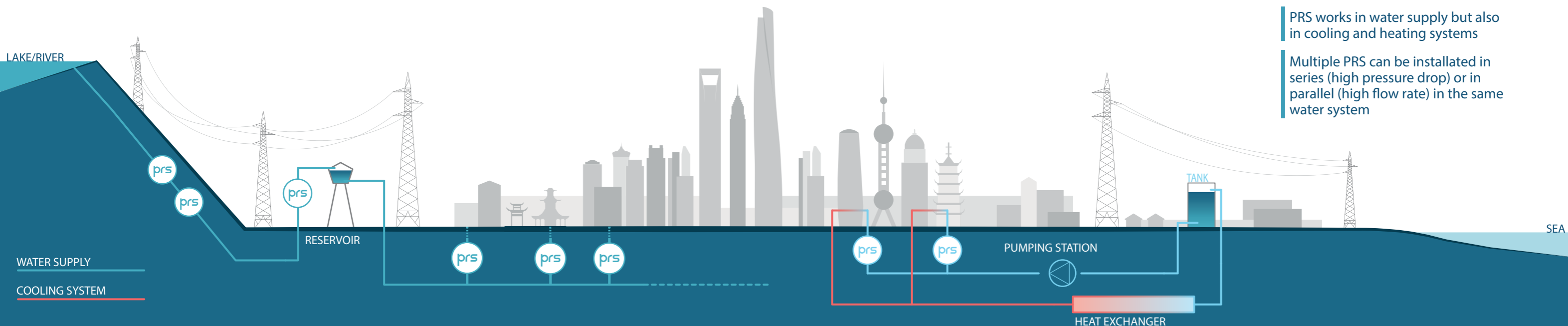
PRS is a smart and autonomous production system, which can be supervised by remote-control

PRS converts excess hydraulic energy, commonly dissipated by valves, into electricity with zero CO2 emissions. The implemented logic control allows the automatic regulation of the system to attain the pressure or flow rate set-point.

PRS allows to reduce water losses and to drop energy costs

PRS works in water supply but also in cooling and heating systems

Multiple PRS can be installed in series (high pressure drop) or in parallel (high flow rate) in the same water system



award

INTERNATIONAL WATER EXHIBITION
TECHNOLOGIES, TREATMENT, DISTRIBUTION, SUSTAINABILITY



INNOVATION SHOWCASE
SELECTED PRODUCT

sponsor



*Ministero
dello Sviluppo Economico*


partner



UNIVERSITÀ DEGLI STUDI DI PALERMO

contacts

 Via Agrigento, 67 - Palermo

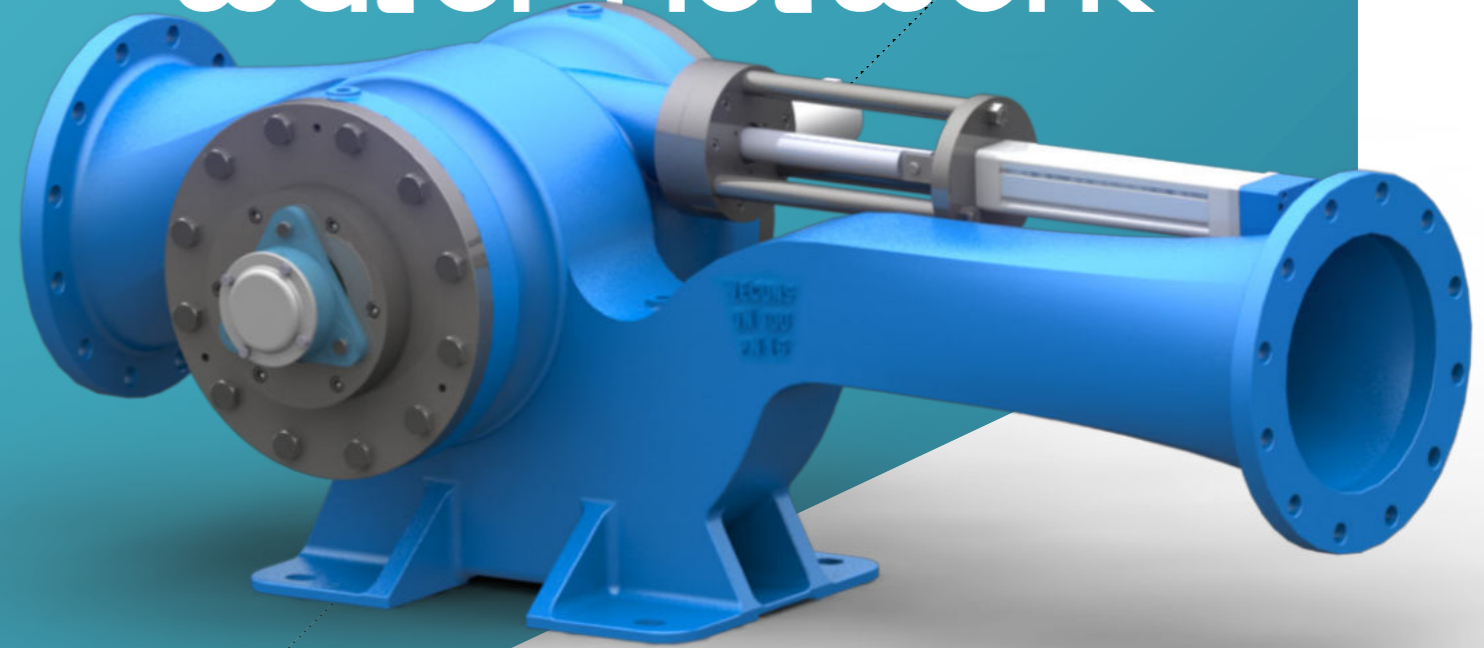
 +39 0915079946

 info@wecons.it

 www.wecons.it

 wecons

earn by water network



prs[®]

power recovery system

patented system



powered by

wecons
water engineering consulting

awards

INTERNATIONAL WATER EXHIBITION
TECHNOLOGIES, TREATMENT, DISTRIBUTION, SUSTAINABILITY



INNOVATION SHOWCASE
SELECTED PRODUCT

sponsor



*Ministero
dello Sviluppo Economico*

partners



UNIVERSITÀ DEGLI STUDI DI PALERMO

contacts



Via Agrigento, 67 - Palermo



+39 091 5079946



info@wecons.it



www.wecons.it



wecons